

# CONTENTS

Reference Pages (see inside front cover)

Preface *xi*

## PART I FUNCTIONS, LIMITS, AND DERIVATIVES

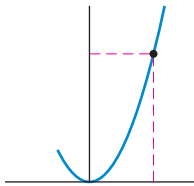
1

### 0 The Basics 2



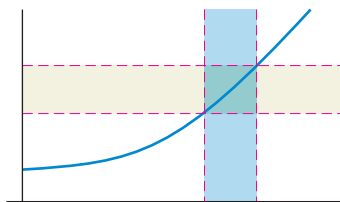
- 0.1 Numbers and Sets 3
- 0.2 Equations 14
- 0.3 Inequalities 25
- 0.4 Logic 36
- 0.5 Proofs 46

### 1 Functions 56

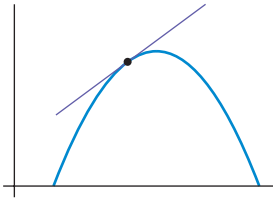


- 1.1 What Is a Function? 57
- 1.2 Graphs of Functions 67
- 1.3 Linear Functions 81
- 1.4 A Basic Library of Functions 91
- 1.5 Combinations of Functions 98
- 1.6 Transformations and Symmetry 109
- 1.7 Inverse Functions 123

### 2 Limits 134



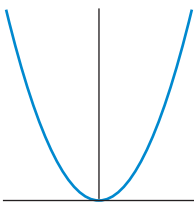
- 2.1 Intuitive Notion of Limit 135
- 2.2 Formal Definition of Limit 147
- 2.3 Delta–Epsilon Proofs 157
- 2.4 Limit Rules 167
- 2.5 Calculating Limits 178
- 2.6 Continuity 190
- 2.7 Two Theorems About Continuous Functions 205
- 2.8 Appendix: Proofs of Selected Limit Rules 215

**3 Derivatives** 220

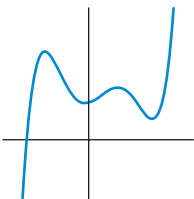
- 3.1** Tangent Lines and the Derivative at a Point 221
- 3.2** The Derivative as an Instantaneous Rate of Change 235
- 3.3** Differentiability 245
- 3.4** The Derivative as a Function 256
- 3.5** Basic Differentiation Rules 271
- 3.6** Three Theorems About Tangent Lines 284
- 3.7** The First Derivative and Function Behavior 296
- 3.8** The Second Derivative and Function Behavior 308

**PART II ALGEBRAIC FUNCTIONS**

323

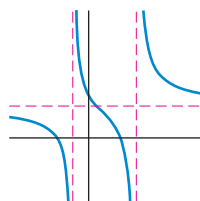
**4 Power Functions** 324

- 4.1** The Algebra of Power Functions 325
- 4.2** Limits of Power Functions 337
- 4.3** Derivatives of Power Functions 346
- 4.4** Graphs of Power Functions with Integer Powers 360
- 4.5** Graphs of Power Functions with Rational Powers 372

**5 Polynomial Functions** 386

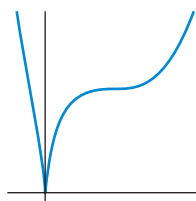
- 5.1** The Algebra of Polynomial Functions 387
- 5.2** Limits and Derivatives of Polynomial Functions 400
- 5.3** Graphing Polynomial Functions 412
- 5.4** Optimization with Polynomial Functions 425

## 6 Rational Functions 439



- 6.1 The Algebra of Rational Functions 440
- 6.2 Limits and Asymptotes of Rational Functions 450
- 6.3 Derivatives of Rational Functions 463
- 6.4 Graphs of Rational Functions 472

## 7 General Algebraic Functions 482

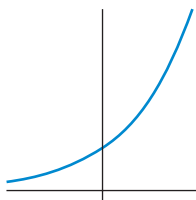


- 7.1 Working with Algebraic Functions 483
- 7.2 The Product Rule and the Chain Rule 490
- 7.3 Implicit Differentiation 502
- 7.4 Related Rates 509
- 7.5 Optimization and Curve Sketching 518

## PART III TRANSCENDENTAL FUNCTIONS

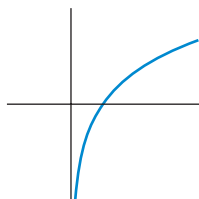
529

## 8 Exponential Functions 530



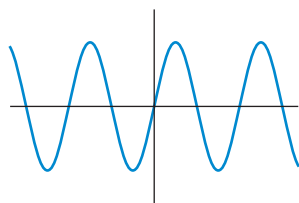
- 8.1 The Algebra of Exponential Functions 531
- 8.2 The Natural Exponential Function 538
- 8.3 Limits of Exponential Functions 549
- 8.4 Derivatives of Exponential Functions 557
- 8.5 Graphs of Exponential Functions 566
- 8.6 Applications of Exponential Functions 575
- 8.7 L'Hôpital's Rule 586

## 9 *Logarithmic Functions* 599



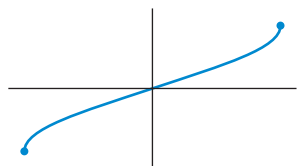
- 9.1 The Algebra of Logarithmic Functions 600
- 9.2 Limits and Derivatives of Logarithmic Functions 609
- 9.3 Using Logarithms as a Computational Tool 620

## 10 *Trigonometric Functions* 629



- 10.1 Right Triangle Trigonometry 630
- 10.2 Unit Circle Trigonometry 639
- 10.3 The Algebra of Trigonometric Functions 649
- 10.4 Limits of Trigonometric Functions 659
- 10.5 Derivatives of Trigonometric Functions 670
- 10.6 Graphs of Trigonometric Functions 678

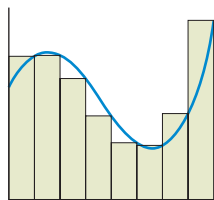
## 11 *Inverse Trigonometric Functions* 692



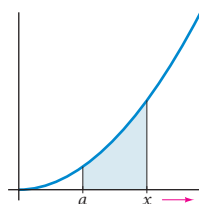
- 11.1 Defining the Inverse Trigonometric Functions 693
- 11.2 Derivatives of Inverse Trigonometric Functions 703

## PART IV INTEGRATION

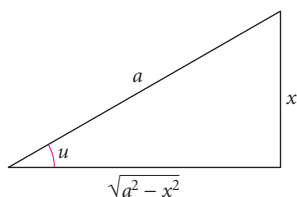
713

**12** *Definite Integrals* 714

- 12.1** Geometric Approximation and Sigma Notation 715
- 12.2** Approximating Area with Riemann Sums 727
- 12.3** The Definite Integral 741
- 12.4** Area and Average Value 752

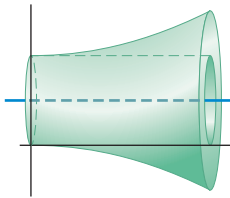
**13** *The Fundamental Theorem of Calculus* 766

- 13.1** Indefinite Integrals 767
- 13.2** The Fundamental Theorem of Calculus 778
- 13.3** Functions Defined by Integrals 787

**14** *Basic Integration Techniques* 801

- 14.1** Integration by Substitution 802
- 14.2** Integration by Parts 812
- 14.3** Trigonometric Integrals 824
- 14.4** Trigonometric Substitution 834

## 15 Applications of Integration 847



- 15.1 Arc Length 848
- 15.2 Volumes by Slicing 856
- 15.3 Volumes by Shells 870
- 15.4 Practical Applications 882

*Selected Answers* A-1

*Index* A-51

*Reference Pages* R-4

(continued from  
inside front cover)